

OneGuide

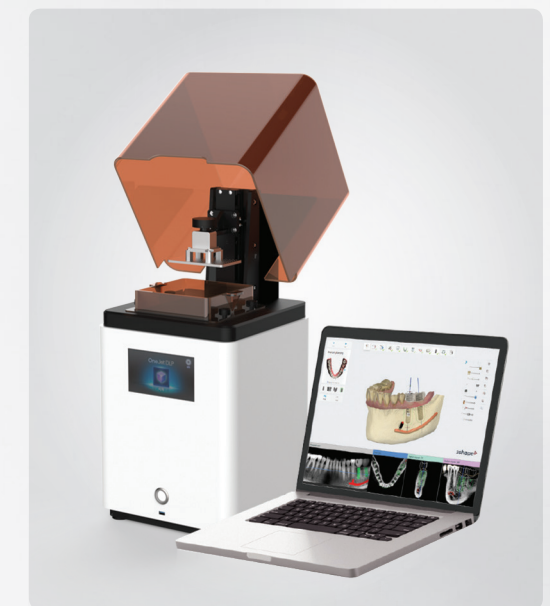
- Safe and precise surgery by an accurate guide without errors
- Fast and convenient surgery using the super simple 122 Drilling Concept
- Possible to immediate loading using a Custom or Stock abutment
- In-house guide production with free OneGuide library (3D printer required)
- No limitation in clinical cases with 4 specialized KITS

Sophisticated OneGuide Drilling Concept!



In-house Guide Production with Free OneGuide Library

In-house guide production with the planning SW and a 3D printer



OneGuide KIT Line up

<p>OneGuide KIT From implant placement to prosthesis</p>	<p>OnePositioning KIT KIT for positioning of implant placement</p> <p>+ 122 Taper KIT</p>	<p>OneCAS KIT KIT for maxillary sinus surgery</p>	<p>OneMS KIT KIT for narrow bone width</p>
---	--	--	---

OneGuide Order/Production

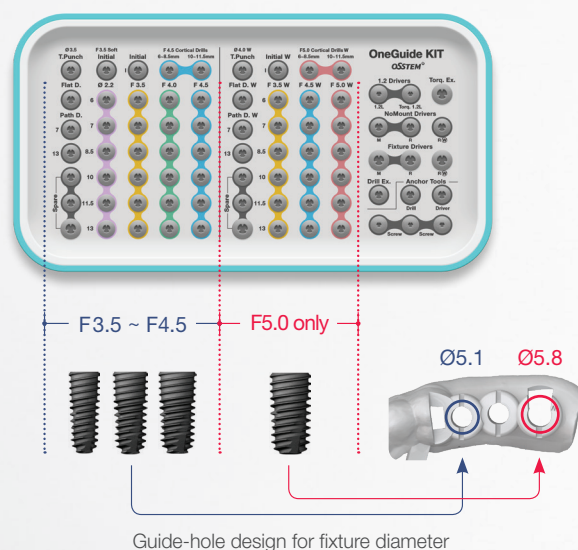


OneGuide KIT Line up

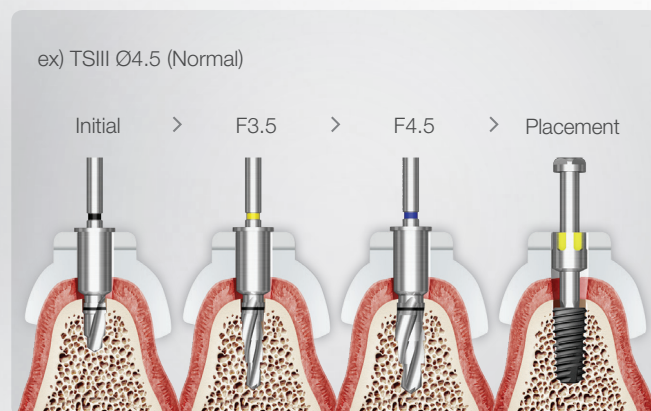
From a Single Tooth to a Fully Edentulous Case and Immediate Loading

OneGuide KIT

- F3.5~F4.5 (left) and F5.0 (right) drills are available for use depending on the implant diameter
- Simple implant placement after drilling 3~4 times, depending on the bone quality



Implant Placement after Drilling 3~4 Times

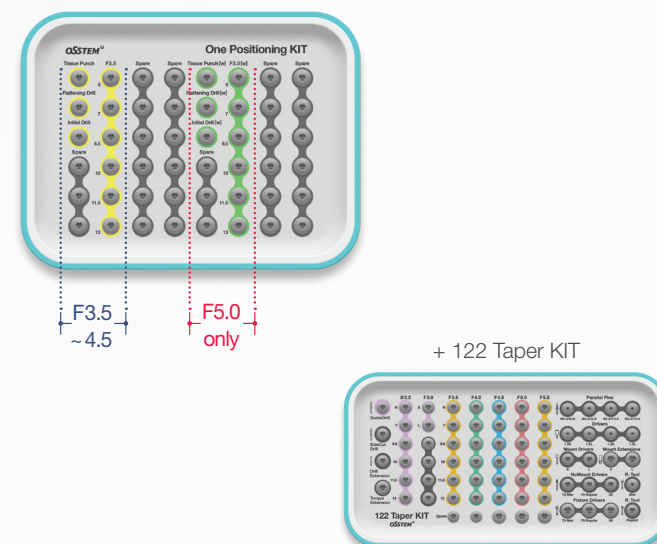


Specifications TSIII/IV F3.5~F5.0, SSIII F3.5~F4.5
USIII F3.5~F5.0 (*SS/US : Dedicated placement equipment sold separately)

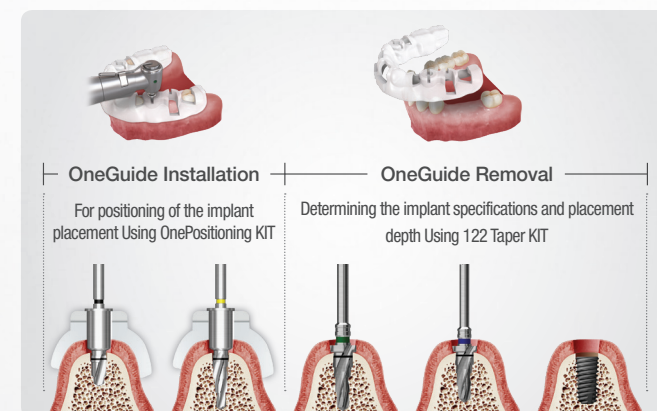
For Positioning of Implant Placement

OnePositioning KIT

- Placement position and depth can be determined by using from the initial drill to the Ø3.5 drill
- After Ø3.5 drilling, guide removal and gingival incision, the surgery can be completed with conventional surgical kit, depending on the situation



Determination of Implant Placement Position and Depth

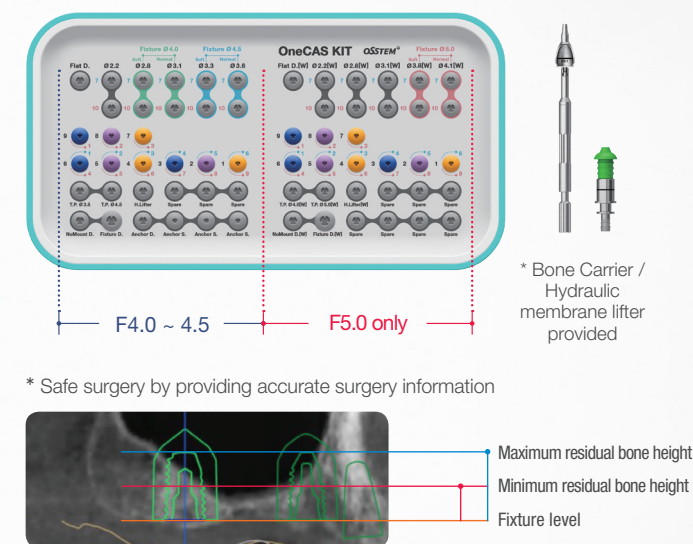


Specifications All implants F3.5 or larger

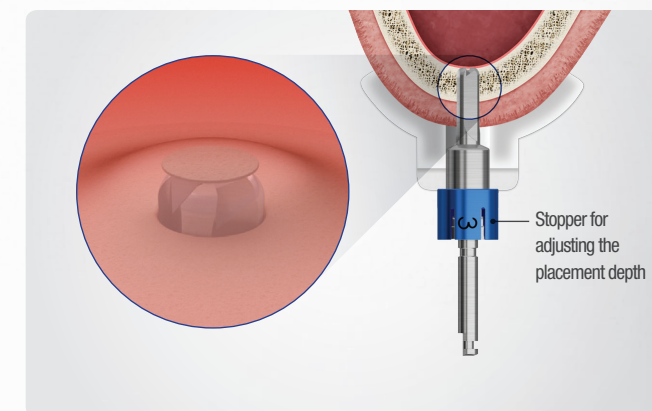
For Maxillary Sinus Surgery

OneCAS KIT

- Proven CAS KIT drill design and application of a stopper system
- After lifting the maxillary sinus, implant placement and prosthetics are possible with OneGuide KIT



Drilling Depth Adjustment of OneCAS KIT

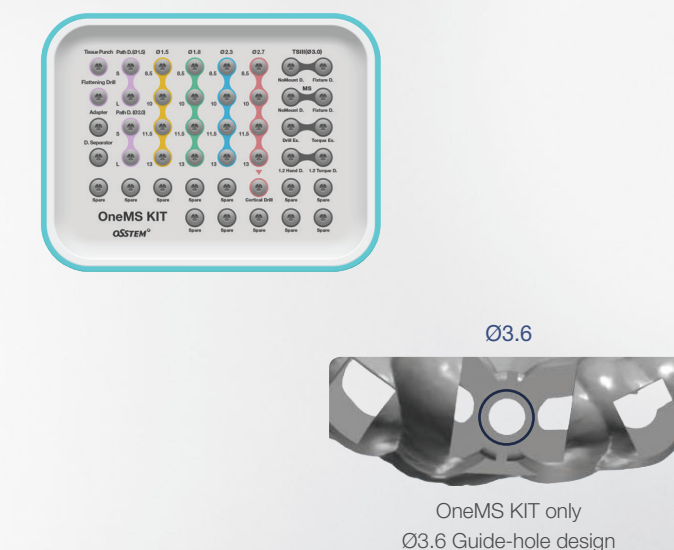


Specifications TSIII/IV F4.0~F5.0, SSIII F4.0~F4.5
USIII F4.0~F5.0

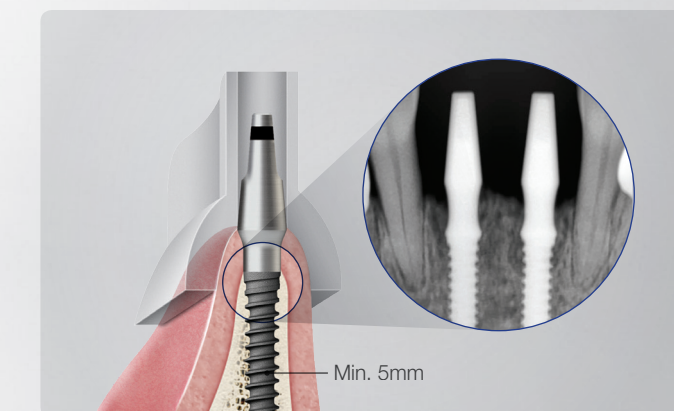
For Narrow Bone Width (min. 5mm) such as the Mandibular Anterior Teeth

OneMS KIT

- Implant placement and prosthetics only with OneMS KIT
- MS Ø2.0~3.0, TSIII Ø3.0 can be placed



Implant Placement for Narrow Bone Width using the OneMS KIT



Specifications MS Narrow Ridge Ø2.0~3.0, MS Denture Ø2.0~3.0, TSIII Ø3.0
(*MS Denture : Dedicated placement equipment sold separately; placement after guide removal)