

Clear image, User-friendly CT

T1

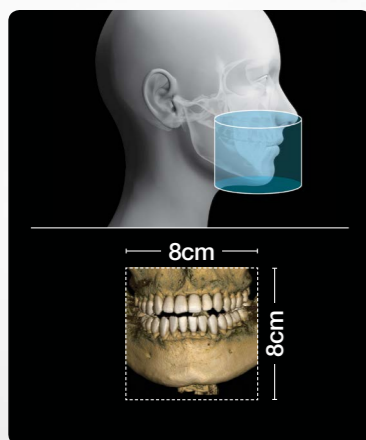
- Wide range of diagnosis as 15X9 FOV
- Easy operation and scan
- Clear image



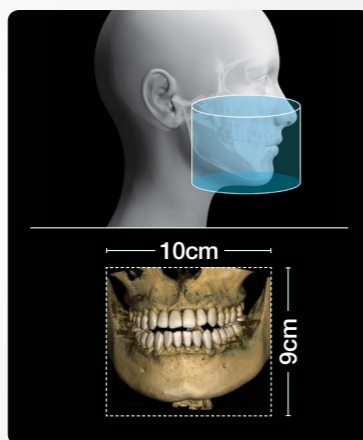
Multi FOV

- Available FOV : 8X8, 10X9, 12X9, 15X9
- Available to specify scanning area (Maxilla, Mandible single arch, Both arch, TMJ and etc.)

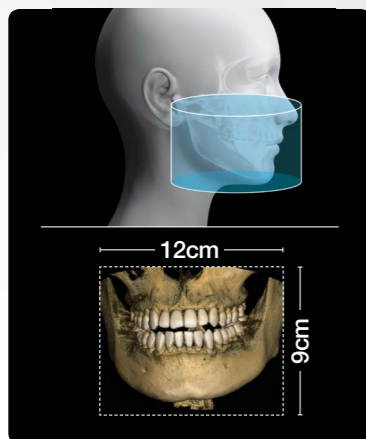
FOV 8 X 8



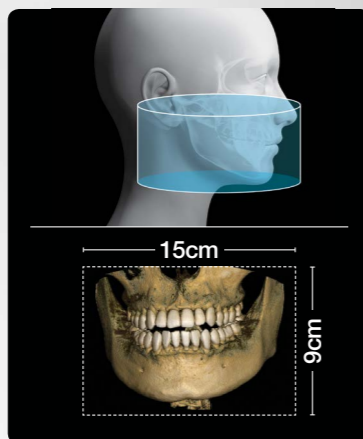
FOV 10 X 9



FOV 12 X 9



FOV 15 X 9

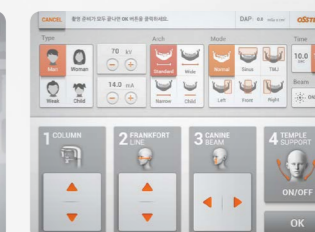


Intuitive GUI

Easy selection of sex, age, scanning area and etc. in each mode with intuitive interface and touch panel



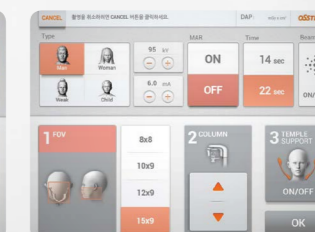
Scanning mode



Panorama mode

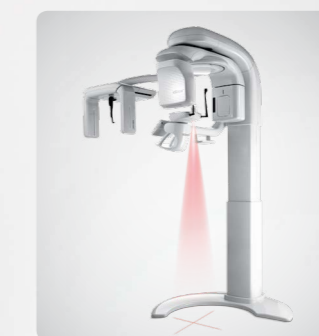


Cephalo mode



CT mode

High ease of use



Patient alignment laser



Mood light displaying status



Highly permeable support

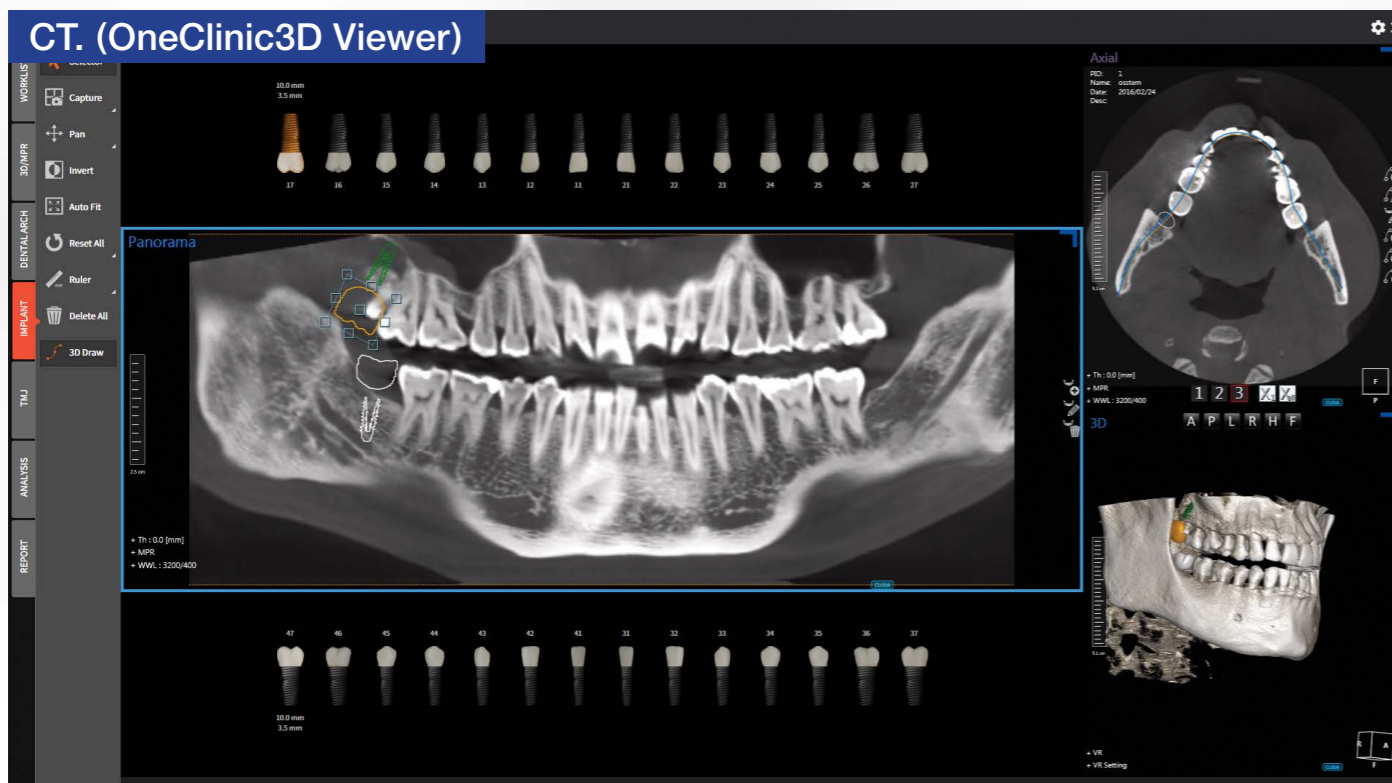
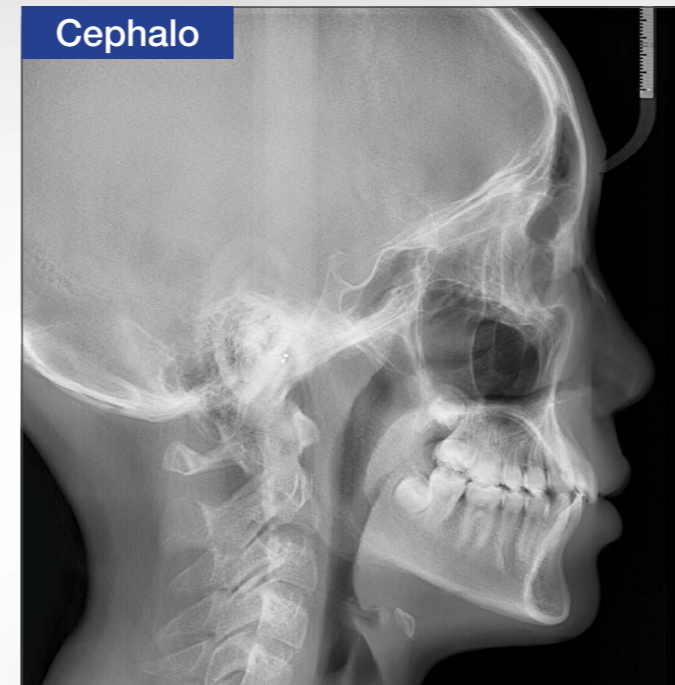


Voice support

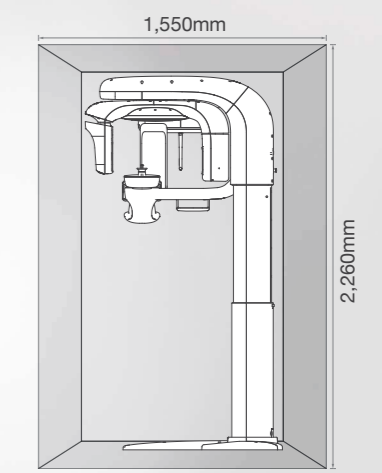
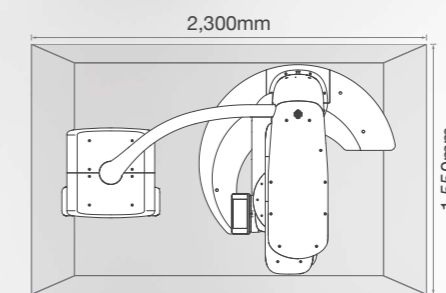
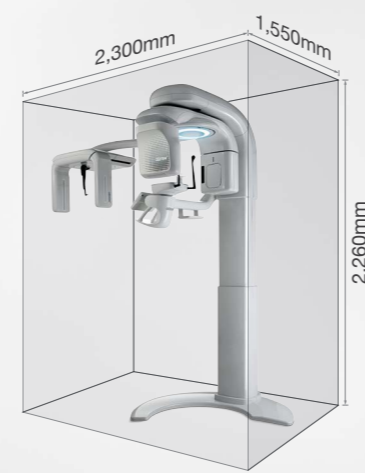
Clear image, User-friendly CT

T1

- Wide range of diagnosis as 15X9 FOV
- Easy operation and scan
- Clear image



Installation Size



Top View

Side View

Technical Specifications

	CT	Panorama	Cephalo
Scan Time	ND (14sec) / HD (22sec)	ND (10sec) / HD (16sec)	ND (5sec) / HD (10sec)
Voxel Size	0.2mm	-	-
Recon Time	40sec	-	-