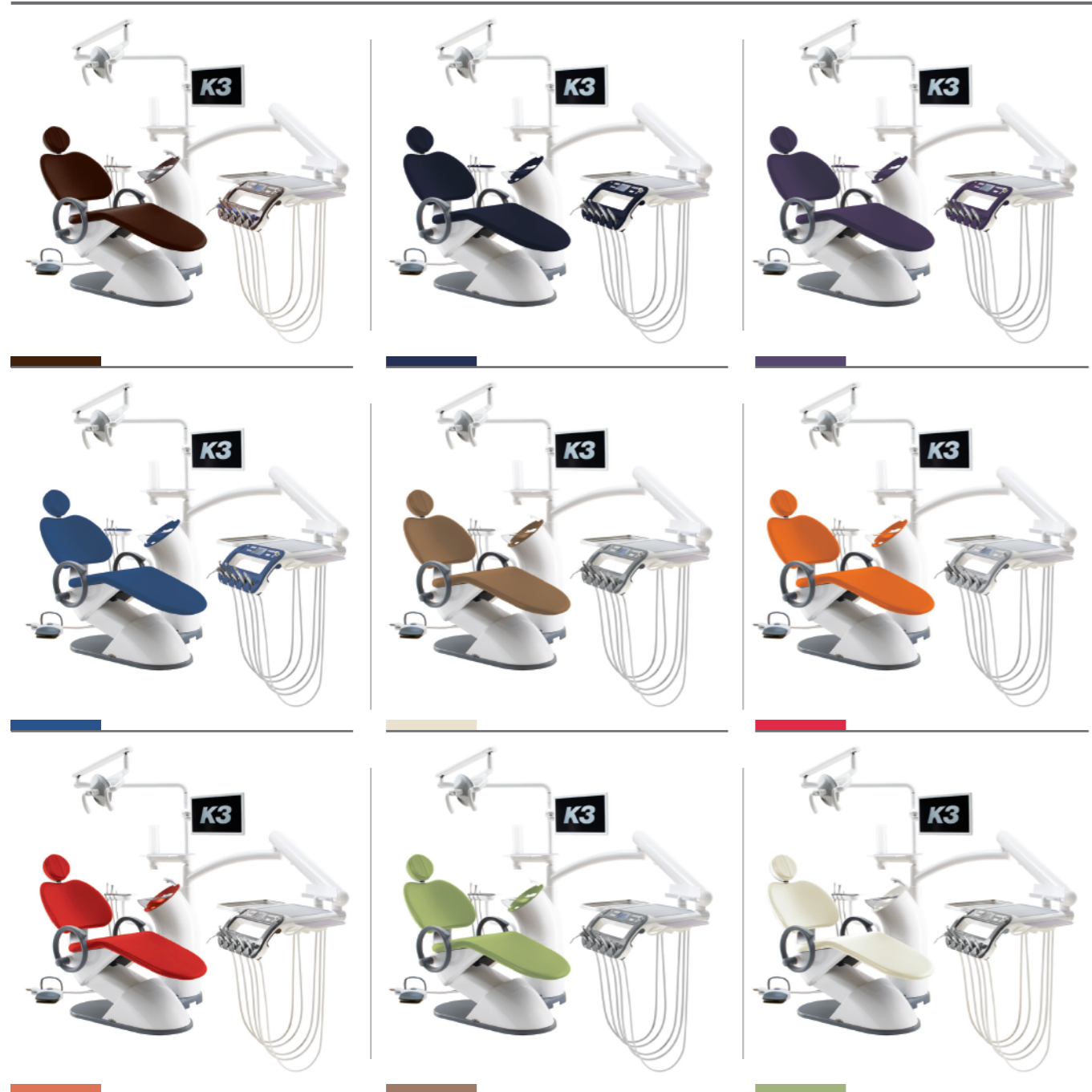


Seat color types



K3 Unit Chair

Amazingly Attractive!

Globally more than 20,000 units
installed since the release in 2013

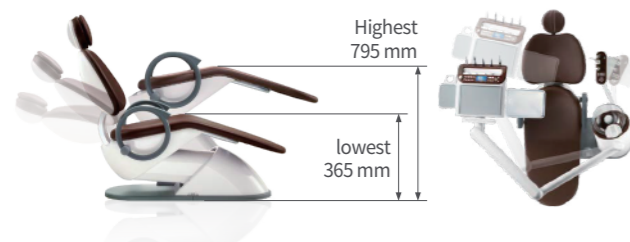


K3 Unit Chair

Healing Unit Chair K3, presented by Osstem Implant

- A revolutionary Osstem Implant Dental Unit Chair K3 was created as a result of persistent research on each component such as main frame, doctor's table, unit, and light.
- The overall design of K3 accentuates its curved lines and figures. It blends in well with any dentist's office. There are nine different color options, from darker colors such as brown and navy blue to lighter tones including ivory and orange. K3 has proven its durability by going through 10,000 lift-offs and five years of rebooting(power ON/OFF) without any trouble.
- K3 had been honored with Good Design Award, its popularity has driven the unique dental equipment to function as an aesthetic element of medical interior.

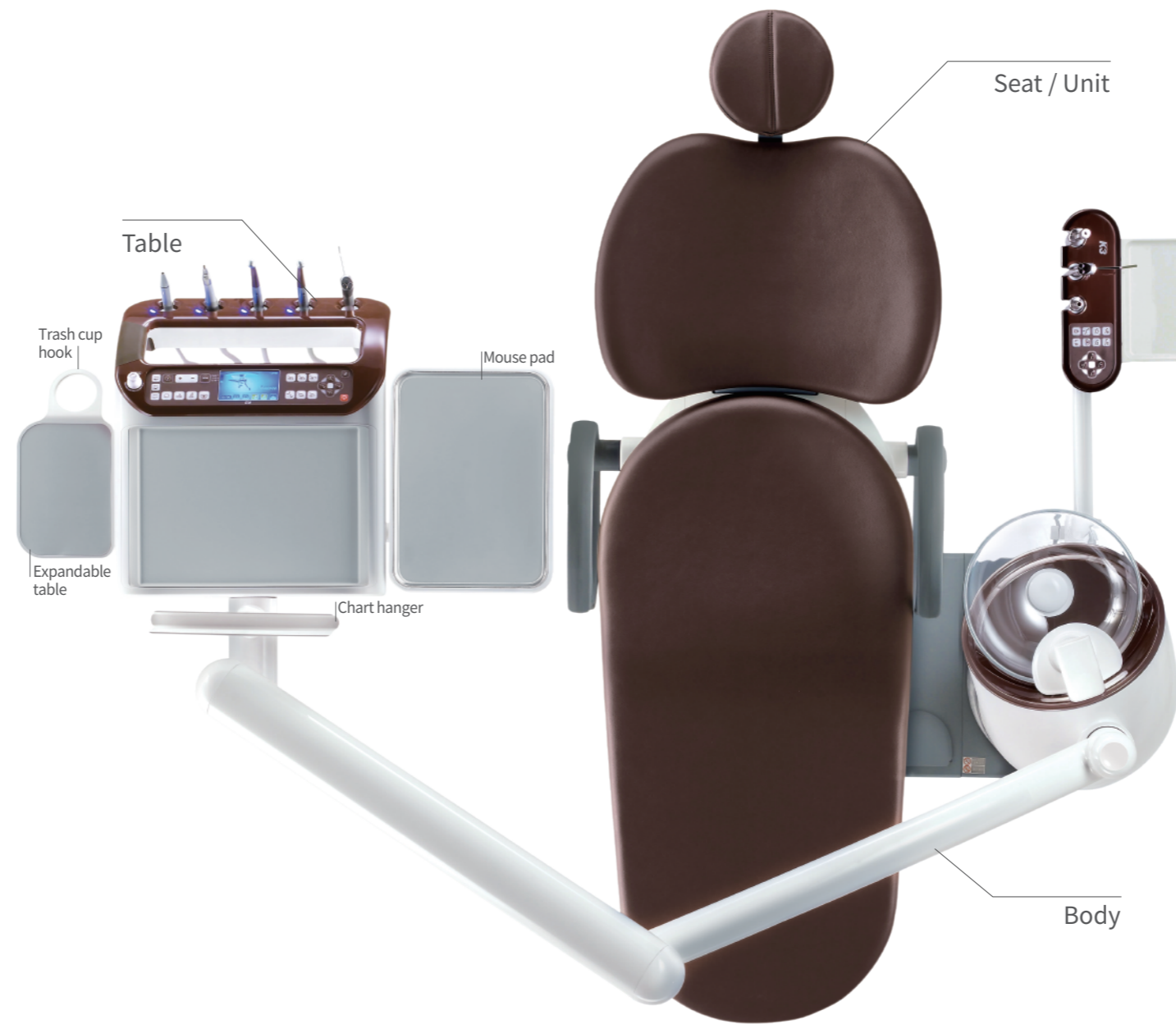
Optical Position for Treatment



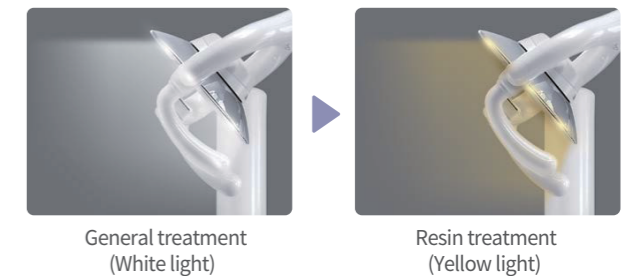
Arm Rest



Table Type



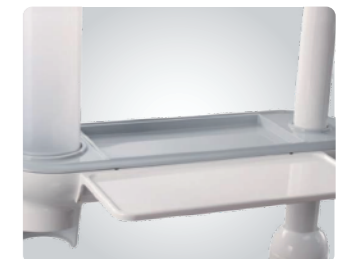
LED Light



Water Supply Sys-dual Sensor



All-in-one Console



LCD Monitor Arm



Options

- Electric Mirco-motor (Swiss Bien-Air OEM Product)
 - Scaler (Swiss EMS OEM product) Optic(S5L) / Non-Optic(S5)
 - Handpiece (NSK OEM product)
 - Amalgam separator
 - 2 joint articulating Headrest
 - Double layer Backrest & Seat
- ※Please, contact Deutsche Osstem in case you have inquiry

Detailed images of the product are subject to change by manufacturer's policy