

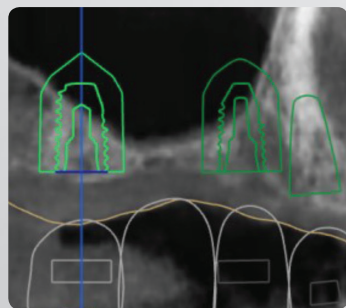
Sinus Surgery, Now with OneCAS KIT

OneCAS KIT

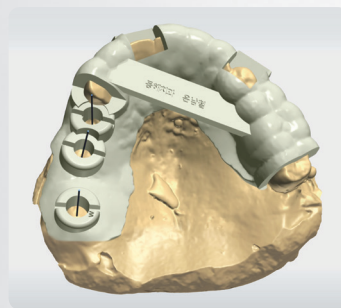
- Decide implant position and specification through Digital Planning
- Place OneGuide surgical template and perform accurate drilling and safe implantation
- Sinus lifting without perforation by CAS KIT drill
- Simple sequence allows easy and convenient surgery

Decide Implant Position and Specification through Digital Planning

- Decide implant position and specification in sinus through Digital Planning with CT and oral data
- Fabricate OneGuide template that enables surgery as digital planned



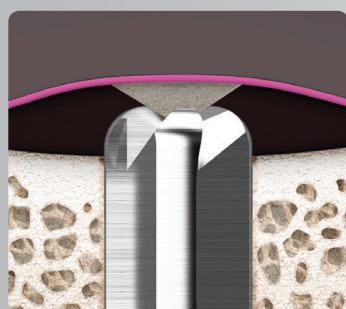
Decide implant position and specification by computer



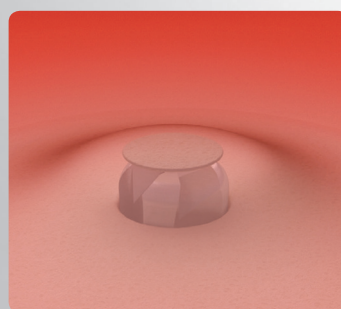
Fabricate Oneguide surgical template for Sinus

Sinus Lifting without Perforation by CAS KIT Drill

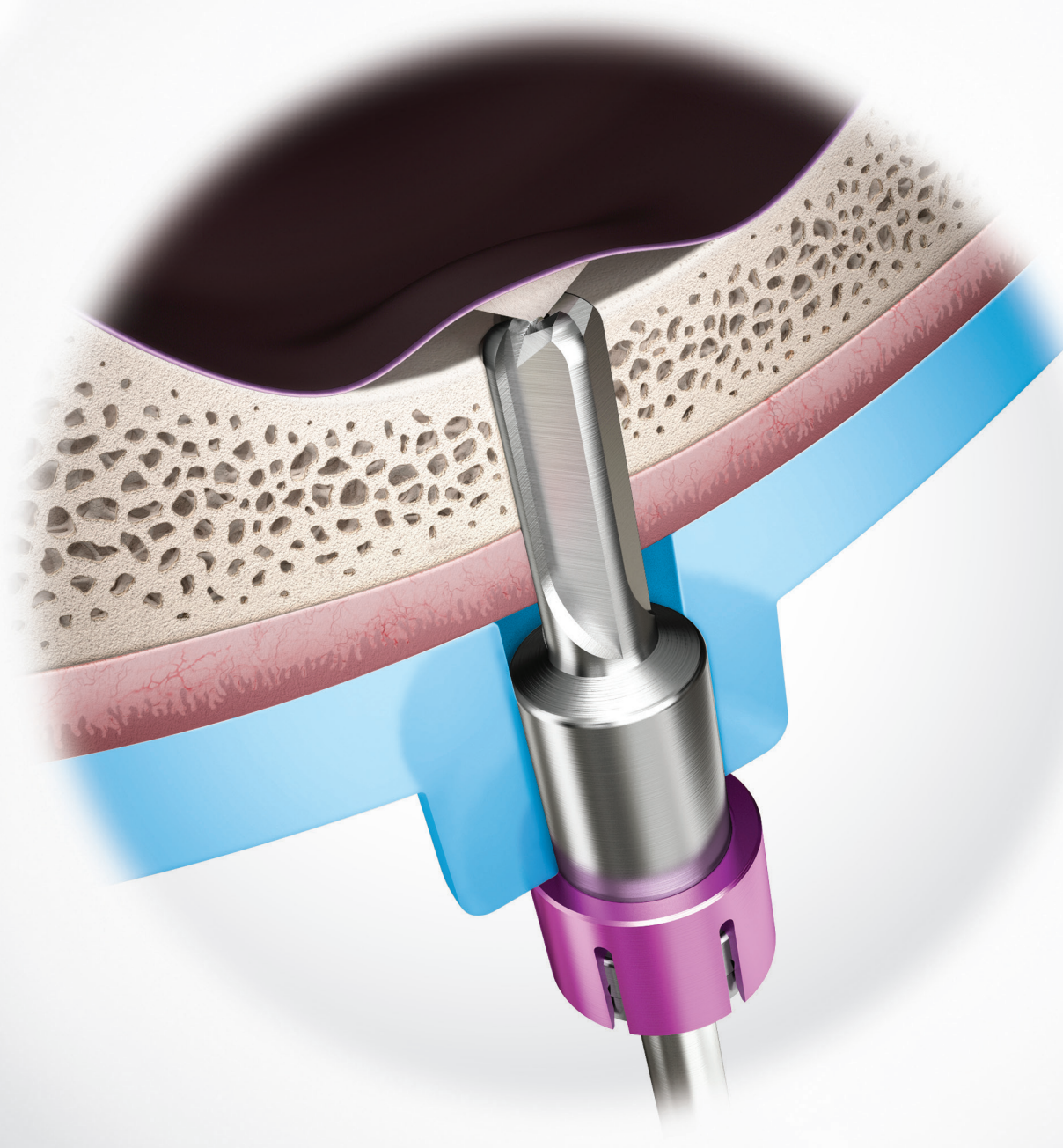
CAS Drill with round end prevents membrane perforation



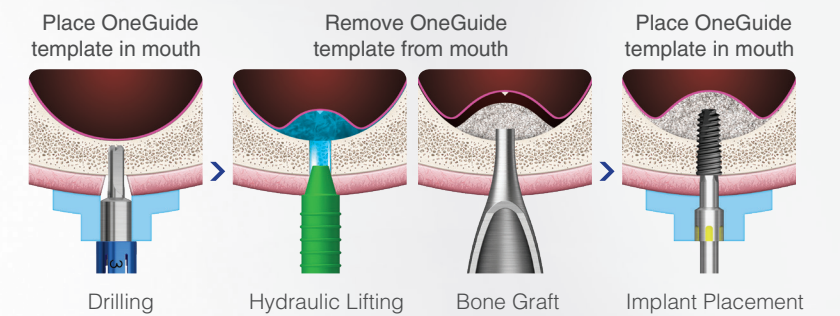
Safe round-shaped drill



Prevents membrane perforation

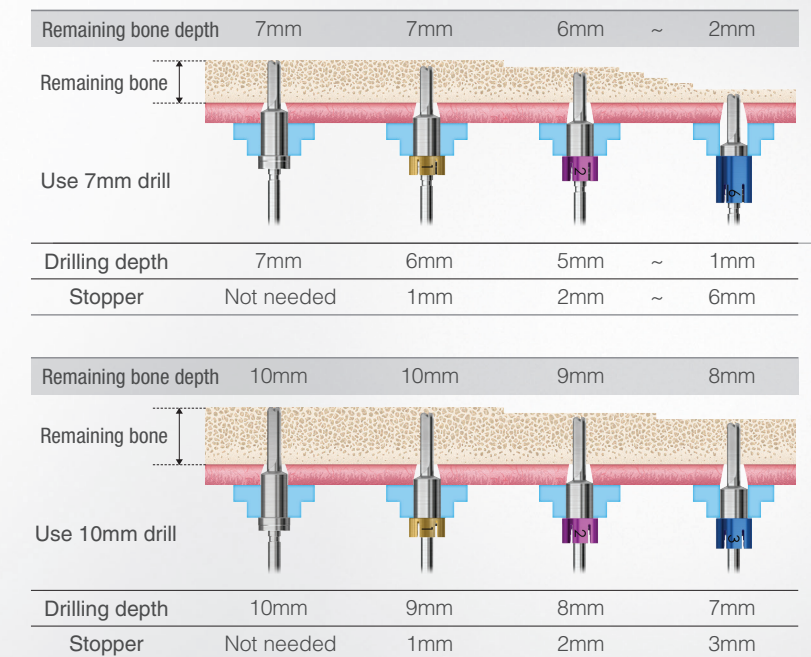


Place OneGuide Surgical Template and Perform Accurate Drilling and Safe Implantation

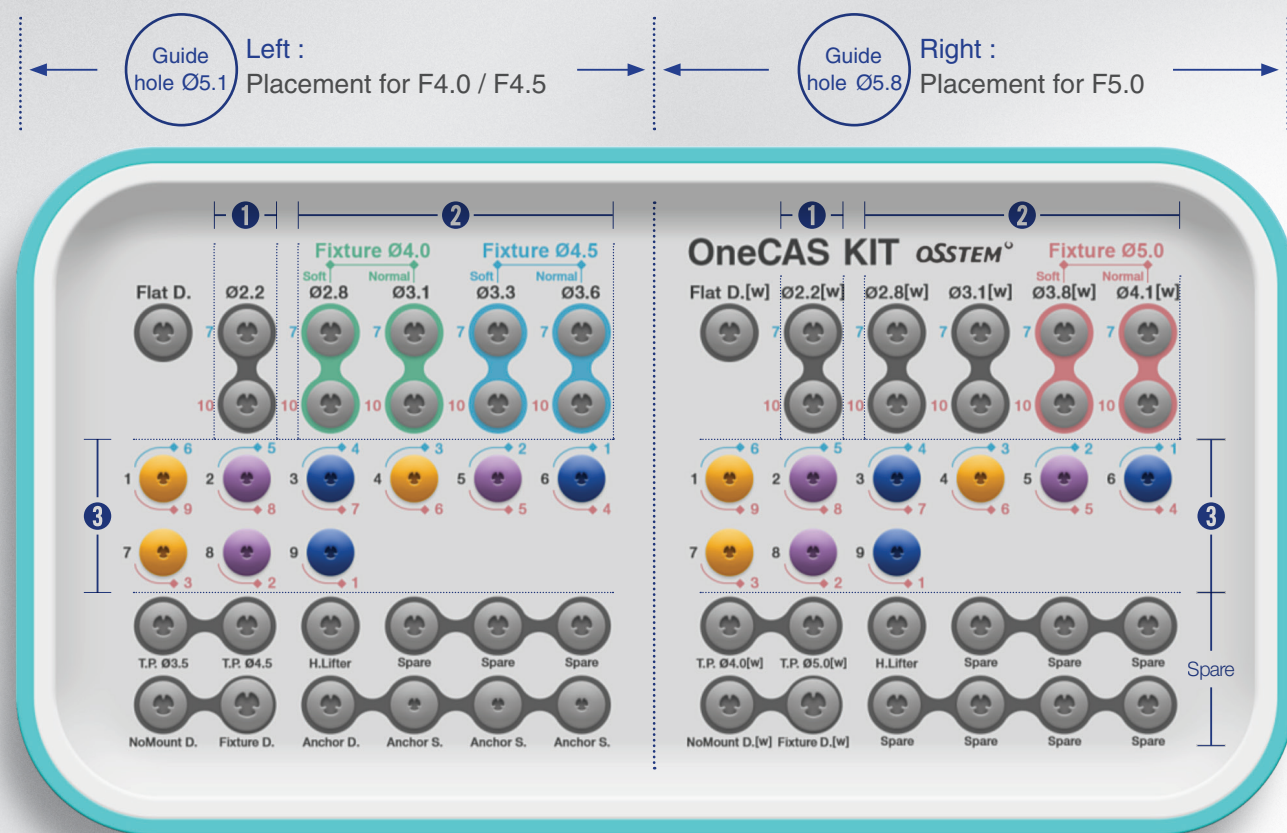


Simple Sequence Allows Easy and Convenient Surgery

- 7,10mm drills can be used for area with 2~10mm remaining bone
- Stoppers are designed by 1mm unit, precise drilling depth control is possible



Layout of OneCAS KIT and Composition of Main Tools



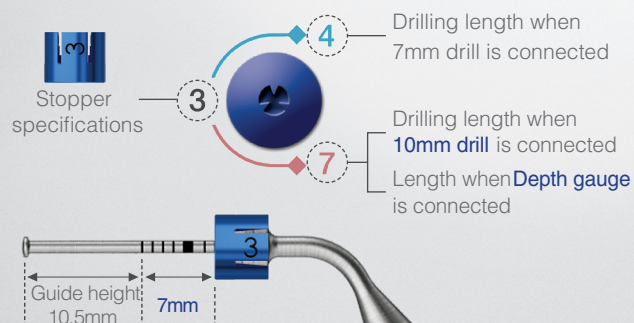
1 Initial Drill (1,200rpm)

- Length: 7/10mm – 2 kinds
- Guide hole : Ø 5.1/Ø 5.8 – 2 kinds
- Connect stopper before use



3 Stopper

- Length : 1~9mm – 9 kinds
- Guide hole : Ø 5.1/Ø 5.8 – 2 kinds



2 OneCAS Drill (800rpm)

- Length: 7/10mm – 2 kinds
- Guide hole : Ø 5.1/Ø 5.8 – 2 kinds
- Connect Stopper before use



4 Other Tools

Hydraulic Membrane Lifter



Bone Carrier

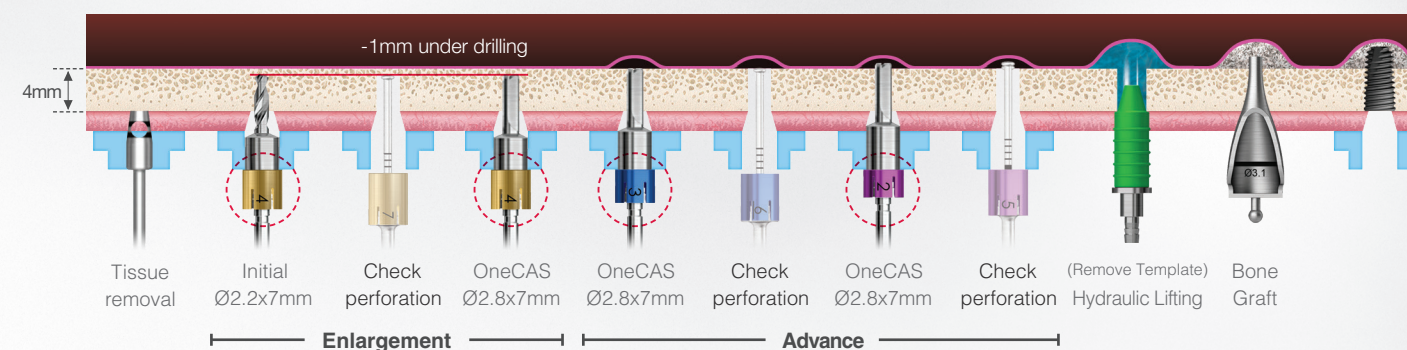


Bone Condenser



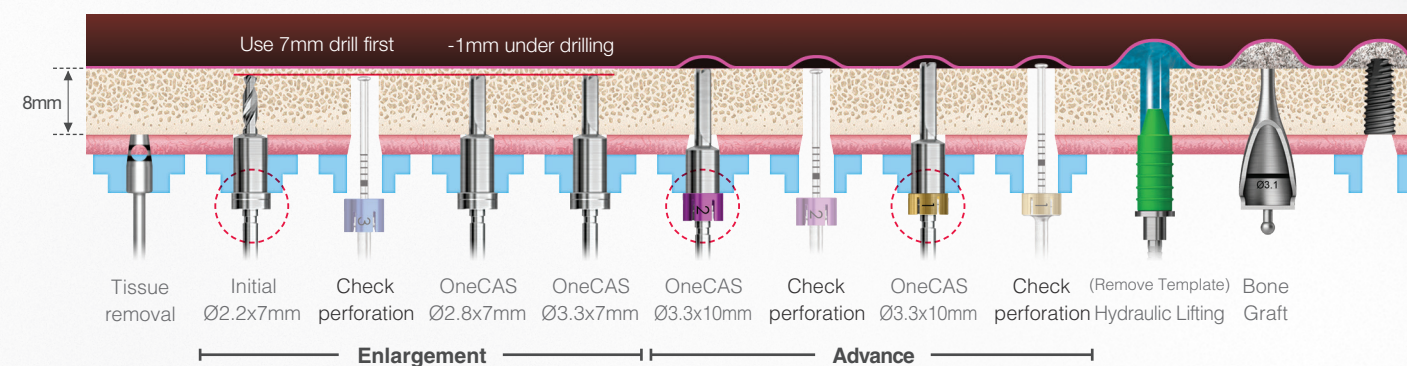
OneCAS KIT Drilling Sequence

Remaining Bone: Less than 7mm eg) Remaining bone 4mm, soft bone: place Ø4.0 Fixture x 8.5mm



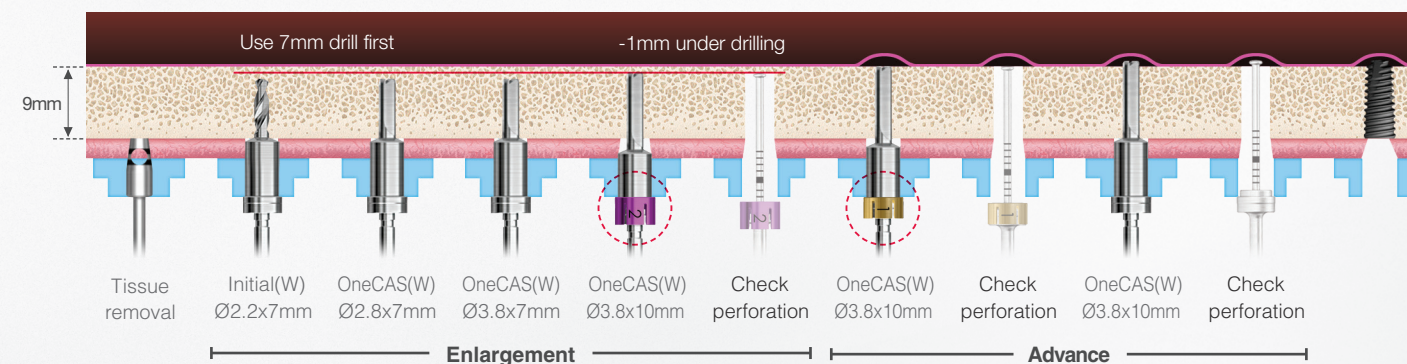
Remaining Bone: More than 7mm ~ Less than 9mm

eg) Remaining bone 8mm, soft bone: place Ø4.5 Fixture x 10mm



Remaining Bone: More than 9mm ~ Less than 10mm

eg) Remaining bone 9mm, soft bone: place Ø5.0 Fixture x 10mm (*Guide hole : Ø5.8(W))



OneCAS Drilling Sequence (Only Enlargement)

Fixture	Bone	F2.2	F2.8	F3.1	F3.3	F3.6	F3.8(W)	F4.1(W)
Ø4.0	Soft	●	●					
	Normal	●	●	●				
Ø4.5	Soft	●	●	●	●			
	Normal	●	●	●	●	●		
Ø5.0	Soft	●	●	●	●	●	●	
	Normal	●	●	●	●	●	●	●